

**PRECIOUS METALS**

**Lauren McConnell, Analyst** | 647.618-6604 | [lmcconnell@paradigmcap.com](mailto:lmcconnell@paradigmcap.com)  
 Don MacLean, Senior Analyst | 416.902-3459 | [dmaclean@paradigmcap.com](mailto:dmaclean@paradigmcap.com)  
 Don Blyth, Analyst | 416. 903-3461 | [dblyth@paradigmcap.com](mailto:dblyth@paradigmcap.com)  
 Jeff Banwell, Associate | 416.678.6179 | [jbawell@paradigmcap.com](mailto:jbawell@paradigmcap.com)

All figures in US\$, unless otherwise noted.

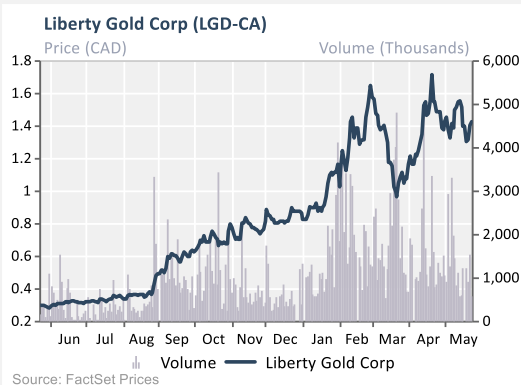
**Rating: Speculative Buy**  
*unchanged*

**12-Month Target: C\$4.30 ↑**  
*previously C\$4.00*

Price (C\$)		\$1.43
Ticker		LGD-V
FYE		31-Dec
Potential ROR (incl. dividend)		201%
Avg 3-month daily vol. (000s)		1,665
Shares O/S	Basic (M)	526.6
	FD-FF (M)*	785.3
Market Cap	Basic (C\$M)	753
	FD-FF (C\$M)*	1,123
Annual Dividend (C\$/sh) / Yield	\$0.00	0%
Company's Reporting Currency		US\$
Cash (\$M)		40.0
Long-Term Debt (\$M)		0.0
Working Capital (\$M)		38.0
Enterprise Value (\$M)		505.0
Net Asset Value - Unfinanced (\$M)		3,858
Net Asset Value - Unfinanced (C\$/sh)		8.99

\* FD-FF: Fully Diluted and Fully Financed; includes in-the-money options & warrants and estimated future equity financing to fund development capex

Operational Data	Annual Avg.	LoM Total
<i>(All Operational Data items are Paradigm Capital Estimates)</i>		
Gold Prod'n (Koz)	186	3,043
Cash Cost (US\$/oz)	1,552	
AISC (US\$/oz)	1,707	



Source: FactSet, Company filings, Paradigm Capital Inc.

**Company description:** Liberty Gold is a junior developer advancing its 100%-owned flagship Black Pine project in Idaho U.S. Black Pine is one of the largest undeveloped oxide gold systems in the region and is currently advancing through federal permitting, including acceptance into the FAST-41 framework, which provides coordinated, transparent permitting timelines. In addition to Black Pine, the company also controls the Goldstrike project in Utah, a future focus within its U.S portfolio.

## Black Pine Site Tour: Thesis Affirmed; Execution Path Coming into Focus

**Investment Thesis.** Liberty offers a compelling late-stage developer rerate as Black Pine advances through feasibility and federal permitting toward construction readiness. With a large, scalable U.S. oxide heap-leach project, improving early-year economics from Rangefront/Discovery and a valuation still well below late-stage peers, LGD provides leveraged gold exposure with multiple near-term derisking catalysts.

### Event

We recently toured Liberty Gold's Black Pine project in southeastern Idaho with senior management. While this was not our first visit to site, the tour reaffirmed our view on both the scale of the system and the quality of the team now tasked with taking Black Pine through feasibility, permitting, financing and construction.

### Highlights

- ▶ Permitting Path Is Now Key Differentiator** | Black Pine is no longer an open-ended U.S. permitting story. The project has FAST-41 Covered Project status, a co-ordinated federal and Idaho state permitting schedule, the NOI has been issued and the EIS process is underway. The current schedule targets a January 2028 Record of Decision (RoD), supporting a path toward construction in 2028 and first gold in late 2028/2029.
- ▶ FS Should Be Viewed as a Starting Point, Not the End State** | The current ~6Moz oxide resource and upcoming Feasibility Study (FS), expected in October (Q4/26), should be viewed as a snapshot in time. The site visit again highlighted the scale of Black Pine, with multiple zones contributing to the broader footprint. We believe the project can continue to grow, but fixing the initial mine plan now is the right strategy to advance permitting and move toward construction.
- ▶ Simple Project, But Not a Simple Team Requirement** | Black Pine is a run-of-mine heap-leach project with limited processing complexity, low capital intensity and strong gold leverage. That said, execution discipline across permitting, metallurgy, water, sequencing and early-year grade control will be critical. Meeting Matt Zietlow on permitting, Tyler Cole on project execution and the owner's team, and Richard on mining/metallurgy increased our confidence that Liberty has the right technical group to transition Black Pine from discovery to delivery.
- ▶ Funding Risk Reduced, Rerate Still Ahead** | The monetization of Goldstrike and Gage, together with Centerra's continued 9.9% ownership, strengthens Liberty's funding position and narrows the story to Black Pine. At ~C\$1.43, LGD trades at only ~0.16x our unfinanced NAV of ~C\$8.99/sh and ~0.20x our financed NAV of ~C\$7.12/sh. We see meaningful rerating potential as Black Pine advances through the FS, EIS milestones and financing.

### Valuation & Conclusion

The Black Pine tour affirmed our thesis. The asset is large, simple, scalable and located in a supportive U.S. jurisdiction, but the biggest takeaway was execution confidence. Meeting Matt, Tyler and Richard reinforced that Liberty has built a team capable of managing the key workstreams that matter from here: permitting, feasibility, mine planning, metallurgy, engineering, water and operational readiness. We continue to view Black Pine as one of the most compelling late-stage oxide gold development assets in North America. For target price purposes, we use our base-case unfinanced scenario at our US\$5,500/oz gold target, which yields a C\$12.31/sh NAV. Applying a 0.35x NAV multiple supports our new C\$4.30 target (was \$4.00), above the developer average multiple given Black Pine's jurisdiction, scale, simple process and low capital intensity. At ~C\$1.43, this represents roughly 200% one-year upside. We reiterate our Speculative Buy recommendation.

*Our disclosure statements are located at the end of this report.*

## Tour Details

- **Site Tour Reinforces That Black Pine Is Becoming an Execution Story:** The most important takeaway from the visit was not a change in our investment thesis, but a strengthening of it. Black Pine has always screened well on scale, jurisdiction, simplicity and valuation; however, the tour made the next phase of the story more tangible. Liberty is no longer just trying to prove the size of the gold system. The focus has clearly shifted to what needs to be permitted, built, financed and operated. That distinction matters because this is exactly when we would expect a late-stage developer to transition from long-dated optionality toward a more buildable-asset valuation framework.
- **Permitting Remains the Critical Path, and the Tour Increased Our Confidence in Liberty's Positioning:** Meeting Matt Zietlow was one of the most valuable parts of the trip. Our view coming into the tour was that Liberty had done an unusually good job positioning Black Pine within the FAST-41 framework; after the visit, that view was reinforced. Black Pine now has a co-ordinated federal and Idaho state permitting schedule, reducing the risk that state permits become a separate bottleneck after the federal process. The key public milestones remain straightforward: NOI/scoping in 2026, Draft EIS in 2027, Final EIS later in 2027 and a RoD targeted for January 2028. We continue to model first gold in 2029 but acknowledge that management's late 2028 pathway is credible if the current schedule holds and construction timing is compressed. Encouragingly, management noted that the initial scoping process generated only 55 comments, with roughly two-thirds characterized as broad pro- or anti-mining submissions, which are generally not decision-relevant unless they raise specific issues for the EIS to address and only three NGO submissions raising more detailed issues. While we would not dismiss permitting risk, that level of early feedback appears manageable for a project of this scale and supports our view that Liberty is entering the EIS process from a relatively strong position.
- **The Technical Team Looks Increasingly Aligned with the Build Phase:** One of the most valuable aspects of the tour was meeting the people responsible for taking Black Pine from study to execution. Matt reinforced our confidence in the permitting strategy, Tyler Cole's role in project development and the owner's team gave us greater comfort that the engineering, EIS and construction-readiness workstreams are being managed with the right level of discipline, and Richard's focus on mining/metallurgy reinforced that Liberty is not treating heap-leach simplicity as a reason to under-invest in technical derisking. In our view, this is the right balance: the project is straightforward, but the company is still doing the detailed work required to make it financeable, buildable and ultimately operable.
- **Black Pine's Physical Scale Remains Underappreciated:** This was not our first visit to site, but it was a useful reminder of just how large the system is. The February 2026 resource stands at 4.88Moz indicated and 1.05Moz inferred oxide gold, with Discovery and Rangefront together accounting for the majority of indicated ounces. Discovery remains important given its grade contribution, while Rangefront is increasingly central to the development discussion given its proximity to the proposed heap-leach facility, stronger metallurgical response and potential sequencing advantages. The broader takeaway is that the upcoming FS should not be viewed as defining the ultimate size of Black Pine. Rather, it should establish the permitted and financeable base case required to start the mine.
- **We Agree with the Strategy of Putting a Pin in the Development Plan:** One risk with large oxide systems is that the resource can keep growing, tempting companies to continually re-optimize rather than move toward construction. We view Liberty's approach as the right one: permit a practical initial plan, complete the FS, advance financing and construction readiness, and then allow future resource growth and operational optimization to support stacking-rate increases, expansions or mine-life extensions over time. The current plan is expected to move from the 50Ktpd Pre-feasibility Study (PFS) case to a 65Ktpd FS/permitting case, but we believe Black Pine likely has a credible path to further expansion once the initial EIS/RoD is secured and the company can amend the plan from a position of operational and permitting momentum. In our view, this is the correct trade-off. The 2026 FS will likely be a snapshot in time, but it should be the one that gets Black Pine built, with future upside from additional ounces, improved sequencing and potential post-approval expansion scenarios.

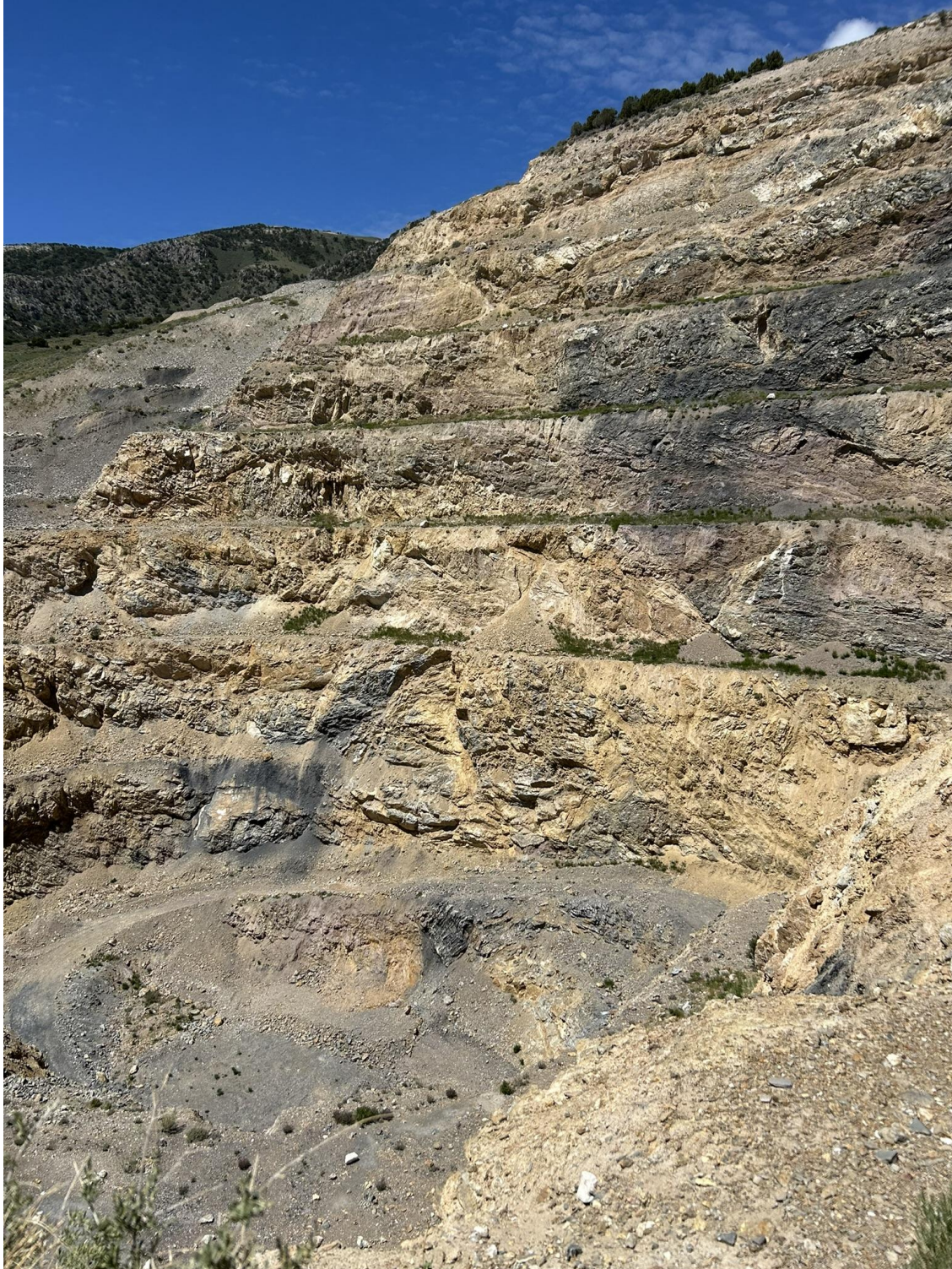
- **Metallurgy Remains a Key Diligence Item, But Liberty Has Done the Work:** Management emphasized that metallurgy is never something to stop testing, even for a project that appears straightforward. Liberty's metallurgical database is already extensive, with multiple phases of test work, large-diameter core, column testing and geometallurgical modelling. The PFS metallurgical model included 174 column tests, with rapid gold extraction characteristic of the deposit and more than 80% of leachable gold extracted within 10 days. Importantly, Liberty is now further validating the run-of-mine heap-leach assumptions through large-diameter column work using material closer to actual mine fragmentation, rather than relying only on smaller columns and extrapolated recovery curves. We view this as an important FS derisking item, as it should improve confidence around recovery assumptions, leach kinetics, reagent consumption, ore-type blending and the sequencing of different zones through the heap.
- **Silver Could Provide Another Financing Lever, But We Would Not Overstate It Today:** While Black Pine remains first and foremost a gold development story, silver represents a potential source of upside that could become more relevant as the FS better defines recoveries, grades and payable by-product assumptions. Silver was historically recovered at Black Pine, with Pegasus producing ~435Koz gold and ~200Koz silver from 1992 to 1997, while the PFS cites 174Koz of historical silver production, or ~0.48 ounces silver recovered for every 1.0 ounce of gold. Silver has not been included in the current mineral resource due to assay/data limitations, but management noted on site that the company has been completing the required re-assay and modelling work, including four-acid digestion sampling and silver recovery curves. While we would not assign material value to this today, even a modest silver stream — management loosely referenced a potential ~800Koz silver recovery case against the PFS-scale gold plan, with upside in the FS — could provide an incremental non-equity financing lever and help reduce future equity requirements.
- **Water and Local Positioning Appear Manageable and Remain Important Advantages:** Water is often one of the key pushbacks for U.S. oxide projects, and it was a focus during the tour. Liberty has secured water rights and is continuing to develop multiple sources, including agreements with nearby farms. The project also benefits from minimal to no surface water interaction, no obvious pit dewatering issue in the current oxide plan, and a brownfield footprint with prior mining and reclamation history. We do not want to dismiss permitting risk, but the environmental setting appears substantially cleaner than many U.S. development projects.
- **The 2026 Drill Program Is Appropriately Focused on Execution, Not Just Ounces:** Liberty's 2026 program is expected to include ~40,000 metres of approved RC drilling, with an additional 10,000 metres contingent on results. Importantly, the program is not simply about growing the resource. It is focused on early production confidence, resource conversion, grade-control support, geotechnical inputs, infrastructure planning and permitting requirements. That is exactly the type of drilling we want to see at this stage. The market often rewards exploration headlines, but for Liberty, the more important value driver is building confidence in the first 2–3 years of mine life and supporting financing readiness.
- **Funding Risk Has Been Reduced, Making the Rerate Thesis Cleaner:** Liberty has simplified the portfolio and improved its balance sheet through the sale of Goldstrike and Gage. Goldstrike alone carries total consideration of US\$72.5M, including upfront cash/shares, US\$20M in deferred cash payments and US\$40M of milestone-based payments. Gage added Blue Moon shares and a 2% NSR. These transactions do not fund the full project build, but they materially improve Liberty's ability to advance feasibility, permitting and selected long-lead work without near-term financial pressure. Centerra's continued 9.9% position adds further strategic validation.
- **We Continue to See the Valuation Gap as too Wide:** Liberty has worked as a top pick, with the stock moving from ~C\$0.91 at the start of the year to ~C\$1.43 currently. However, the move has not closed the valuation gap. On our current spot assumptions, unfinanced NAV is ~C\$8.99/sh, implying LGD trades at only ~0.16x P/NAV. On a financed basis, assuming 60% debt / 40% equity, the NAV is ~C\$7.12/sh, implying ~0.20x P/NAV. That remains low for a project with this scale, a defined permitting schedule, a Q4/26 FS target and a credible path toward construction. As Black Pine advances through the FS and EIS milestones, we believe the valuation framework should increasingly shift toward late-stage developer and ultimately future producer multiples.
- **Bottom Line: The Tour Affirmed Liberty as Our Favourite Developer:** The key message for clients is that the Black Pine story is becoming more actionable, not less. The permitting path is defined, the FS is approaching, the project remains scalable and the team now looks increasingly like a mine-building team rather than an exploration team. We still expect investors to debate U.S. permitting, financing and execution risk, but the site visit gave us more confidence that Liberty is addressing those risks in the right order. In our view, the market has still not fully rerated Black Pine for what it has become: a large, buildable U.S. oxide gold project with a credible path to production late this decade.

**Figure 1: View of the Black Pine Project Area from the Valley Floor, Showing Broad Oxide System and Historic Mining Footprint**



Source: Paradigm Capital Inc.

**Figure 2: Historic Open-pit Exposure at Black Pine, Highlighting Oxide Alteration and Bench-scale Continuity**



Source: Paradigm Capital Inc.

**Figure 3: Black Pine Site View — Looking East Across the Valley and Existing Access Roads**



Source: Paradigm Capital Inc.

**Figure 4: Liberty Share Price and NAV Performance Since Initiation**

	Date	LGD C\$/sh	Spot Au US\$	C\$ Exch	Unfinanced NAV C\$/sh	P/Unfinanced NAV	Financed NAV C\$/sh	P/Financed NAV
Initiation	14-Aug-23	\$0.35	\$1,907	\$0.743	\$2.89	0.09		
First Inclusion in T/20	31-Oct-24	\$0.36	\$2,600	\$0.740	\$5.04	0.07	\$2.09	0.17
~Centerra Investment	24-Sep-25	\$0.60	\$3,700	\$0.725	\$8.05	0.07	\$4.71	0.13
~Receives Completeness Determination for the Mine Plan of Operations	28-Nov-25	\$0.82	\$4,000	\$0.720	\$8.24	0.10	\$5.64	0.15
~Acceptance into FAST-41	23-Jan-26	\$1.12	\$4,900	\$0.725	\$9.77	0.11	\$7.19	0.16
PCI Re-rate Note	28-Jan-26	\$1.12	\$5,400	\$0.738	\$11.18	0.10	\$8.21	0.14
Post Resource Update	11-Feb-26	\$1.46	\$5,084	\$0.737	\$10.21	0.14	\$8.08	0.18
~Post Permitting Schedule Release Under Fast 41	27-Mar-26	\$1.09	\$4,500	\$0.725	\$9.22	0.12	\$6.73	0.16
~Current	22-May-26	\$1.43	\$4,500	\$0.725	\$8.99	0.16	\$7.12	0.20
Delta since Aug 2023		309%	136%	-2%	211%	78%	241%	18%
Median Takeover Multiple with Premium					0.54x	Junior Producer Average Multiple		
<b>Implied share price (based on unfinanced NAV)</b>					<b>\$4.85</b>	<b>Implied share price (based on financed NAV)</b>		
Return					239%	Return		
						189%		

The dates are based on when our Takeover 20 was updated

Our financed NAV is at spot & assumes a capital structure of 60% debt & 40% equity raised at a 5% discount to the current share price

Source: Paradigm Capital Inc.

## DISCLAIMER SECTION

Company	Ticker	Disclosures
Liberty Gold Corp.	LGD-CA	2,3

Note: Please refer to above table for applicable disclosure numbers.

Lauren McConnell toured the Black Pine project in Idaho in May 2026. The company paid for a portion of the trip.

1. The analyst has an ownership position in the subject company.
2. Paradigm Capital Inc. has assumed an underwriting liability for, and/or provided financial advice for consideration to the subject companies during the past 12 months.
3. Paradigm Capital Inc. expects to receive or intends to seek compensation for investment banking services from the subject companies in the next 3 months.
4. Paradigm Capital Inc. has greater than a 1% ownership position in the subject company.
5. The analyst has a family relationship with an Officer/Director of subject company.
6. A partner, director, officer, employee or agent of Paradigm Capital Inc. is an officer or director of the issuer.

Paradigm's disclosure policies and research distribution procedures can be found on our website at [www.paradigmcap.com](http://www.paradigmcap.com). Paradigm Capital Inc. research is available on Bloomberg, CapitalIQ, FactSet and LSEG or at [www.paradigmcap.com](http://www.paradigmcap.com). Issued by Paradigm Capital Inc.

### Stock Coverage History

Date	Target	Rating	Estimates
28-Jan-2026	\$4.00↑	Spec Buy	
21-Oct-2025	\$3.40↑	Spec Buy	
15-Aug-2023	\$1.50	Spec Buy	Initiating Coverage

### Research Rating System

Paradigm Capital Inc. uses the following rating recommendation guidelines in its research:

Recommendation	Number of Companies	Percentage Breakdown	
<b>Buy</b>	67	58%	<b>Buy</b> – Expected returns of 10% or more over 12 months.
<b>Spec. Buy</b>	38	33%	<b>Speculative Buy</b> - Expected returns of 10% or more over the next 12 months on high-risk development or pre-revenue companies, such as junior mining and other early stage companies.
<b>Hold</b>	5	4%	<b>Hold</b> - Expected returns of less than +/- 10% over the next 12 months. Includes companies Under Review.
<b>Sell*</b>	2	2%	<b>Sell</b> - Expected returns of -10% or more over the next 12 months.
<b>Total</b>	112		

\*Includes companies with a "Tender" recommendation

### About Paradigm Capital Inc.

Paradigm Capital Inc. (PCI) is a research-driven, independent, institutional equity investment dealer focused on sectors and companies that have attractive long-term secular growth prospects. PCI's research is available on our website at [www.paradigmcap.com](http://www.paradigmcap.com). Please speak to your Sales or Trading Representative if you require access to the website.

The analyst (and associate) certify that the views expressed in this report accurately reflect their personal views about the subject securities or issuers. No part of their compensation was, is, or will be, directly or indirectly, related to the specific recommendations expressed in this research report.

Analysts are compensated through a combined base salary and bonus payout system. The bonus payout is determined by revenues generated directly or indirectly from various departments including Investment Banking, based on a system that includes the following criteria: reports generated, timeliness, performance of recommendations, knowledge of industry, quality of research and investment guidance and client feedback. Analysts are not directly compensated for specific Investment Banking transactions.

The opinions, estimates and projections contained herein are those of PCI as of the date hereof and are subject to change without notice. PCI makes every effort to ensure that the contents herein have been compiled or derived from sources believed reliable and contain information and opinions, which are accurate and complete. However, PCI makes no representation or warranty, express or implied, in respect thereof, and takes no responsibility for any errors and omissions that may be contained herein and accepts no liability whatsoever for any loss arising from any use of or reliance on this research report or its contents. Information may be available to PCI, which is not reflected herein. This research report is not to be construed as an offer to sell or solicitation for or an offer to buy any securities. PCI, its affiliates and/or their respective officers, directors or employees may from time to time acquire, hold or sell securities mentioned herein as principal or agent. PCI may act as financial advisor and/or underwriter for certain of the corporations mentioned herein and may receive remuneration for same. PCI is a member of The Toronto Stock Exchange, The TSX Venture Exchange and The Canadian Investment Regulatory Organization (CIRO).

Any products or services mentioned on this website are made available only in accordance with local law (including applicable securities laws) and only where they may be lawfully offered for sale. PCI will not open accounts except in jurisdictions in which it is registered.

**To U.S. Residents:** This report was prepared by PCI which is not subject to U.S. rules with regard to the preparation of research reports and the independence of analysts. PCUS, affiliate of PCI, accepts responsibility for the contents herein, subject to the terms as set out above. Any U.S. person wishing to effect transactions in any security discussed herein should do so through PCUS.

## RESEARCH

---

### Healthcare

Scott McAuley, PhD, Analyst (Head of Research) 416.985.7352

### Diversified Industries

Razi Hasan, Analyst 416.333.5048

Alexandra Ricci, Analyst 416.436.4023

James Smith, Associate 416.402.0933

### Technology

Daniel Rosenberg, Analyst 416.553.2521

Thomas Hui, Associate 416.573.9108

### Metals, Mining & Agriculture

David Davidson, Senior Analyst 647.526.5719

Jeff Woolley, CFA, Analyst 416.624.0742

Gordon Lawson, Analyst 647.920.4983

Matthew Chong, Associate 416.435.3024

### Gold and Precious Metals

Don MacLean, Senior Analyst 416.902.3459

Don Blyth, Analyst 416.903.3461

Lauren McConnell, Analyst 647.618.6604

Hank Lorimer, Associate 647.502.3973

### Industrial Products

Marvin Wolff, CFA, Analyst 647.403.7920

### Quantitative & Technical Analysis

Aazan Habib, CFA, CMT, Analyst 416-648-2308

## SALES

---

David Beevor (Head of Sales) 416-361-1895

John Bellamy 416.361.6032

David Roland 416.216.6844

Clare Murphy 416-361-1064

Naomi Ebata, CFA 416.364.9764

Jeff Banwell 416.678.6179

## TRADING

---

Peter Dunlop 416.368.6557

Tom George 416.360.3579

Oliver Herbst 416.364.7988

Bruce Latimer 416.368.8353

## OFFICES

---

### Toronto

95 Wellington Street West, Suite 2101, PO Box 55

Toronto, Ontario M5J 2N7

General Line 416.361.9892

Fax Line 416.361.6050

## STOCK RATING SYSTEM

---

**Buy:** Expected returns of 10% or more over 12 months.

**Speculative Buy:** Expected returns of 10% or more over the next 12 months on high-risk development or pre-revenue companies, such as junior mining and other early-stage companies.

**Hold:** Expected returns of less than 10% over the next 12 months.

**Sell:** Expected returns of -10% or more over the next 12 months. .